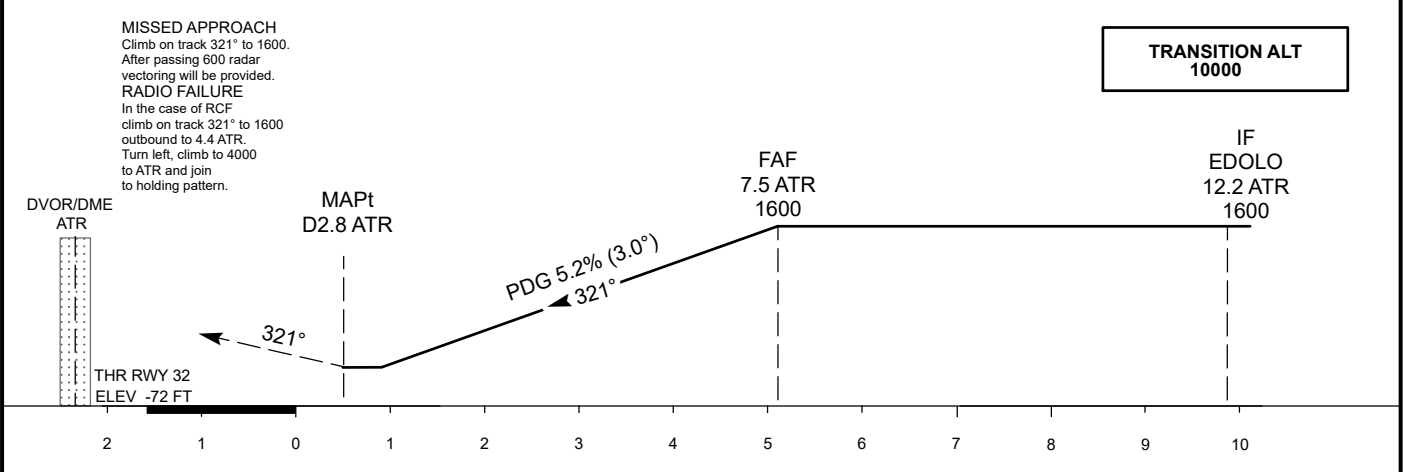
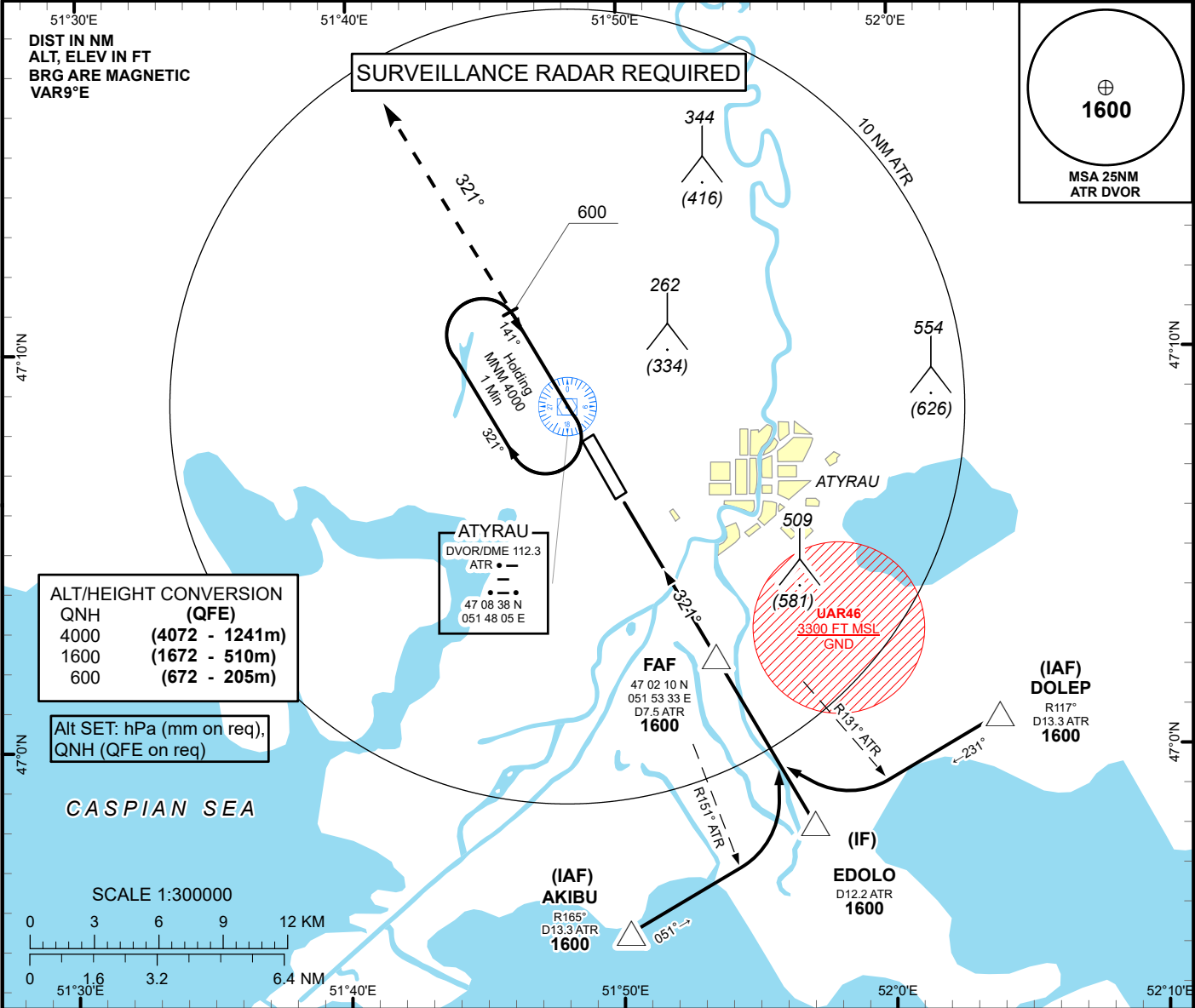


INSTRUMENT  
APPROACH  
CHART - ICAO

AERODROME ELEV -72 FT  
HEIGHTS RELATED TO  
AD ELEV

ATYRAU TOWER 118.1  
ATYRAU ATIS (EN) 127.4  
ATYRAU ATIS (RU) 126.6

ATYRAU  
VOR/DME Y  
RWY 32



Aircraft Category		A	B	C	D	DIST to THR	NM	1	2	3	4	5.1	
Straight-in Approach OCA/H						DME ATR	NM	3.4	4.4	5.4	6.4	7.5	
	VOR/DME	280(350)	280(350)	280(350)	280(350)	ALTITUDE	FT	299	620	943	1267	1600	
						HEIGHT	FT	(371)	(692)	(1015)	(1339)	(1672)	
Aerodrome Operating Minima MDH ft x RVR (CMV)	VOR/DME												
						GS	Kt	80	100	120	140	160	180
						Desc.Rate ( 5.2%)	ft/min	420	530	630	740	840	950
						FAF-MAPt (4.7 NM)	min:sec	3:29	2:47	2:19	1:59	1:44	1:33

ATYRAU  
VOR/DME Y

AERONAUTICAL DATA TABULATION

VOR/DME approach to RWY32 from AKIBU, EDOLO, DOLEP	
Fix/point	Coordinates
ATR DVOR/DME	47° 08' 38,2"N 051° 48' 05,4"E
(FAF) D7.5 ATR	47° 02' 10,31"N 051° 53' 32,86"E
EDOLO (IF) D12.2 ATR	46° 58' 04,52"N 051° 57' 01,84"E
AKIBU (IAF) R165°ATR, D13.3ATR	46° 55' 21,86"N 051° 50' 12,78"E
DOLEP (IAF) R117°ATR, D13.3ATR	47° 00' 46,77"N 052° 03' 51,58"E
THR RWY 32	47° 06' 37.41"N 051° 49' 48.05"E
Final approach descent angle is 3.0°	